



impala

CONNECTING 
**CARBON NEUTRAL FREIGHT
SERVICE**

IMPALA TERMINALS

➤ A NEW SUSTAINABLE FREIGHT SERVICE

ABOUT IMPALA TERMINALS

Impala Terminals designs, implements, owns and operates multimodal logistics assets. We focus on the safe, reliable transfer of dry and liquid bulk cargoes and containers to and from inland sites of production and consumption, through deep-sea ports.

With 28 operations across 20 countries around the world, we are strengthening trading links every day by offering smart, cost-effective and customer-focused solutions.

As a leader in the global multimodal logistics industry, we recognise our shared responsibility to mitigate climate change and the environmental impact of our operations, as well as those of our operating partners and customers.

CARBON NEUTRAL FREIGHT

Impala Terminals now offers the opportunity to offset residual emissions and deliver a certified carbon neutral freight service on behalf of our customers.

Our new 'green' service provides our partners with an accurate calculation of the indirect "Scope 3" greenhouse gas (GHG) emissions generated through the transportation of their cargoes, from their points of collection to points of delivery.

This new service offers a flexible alternative to compensate for those GHG emissions that cannot be physically avoided along a supply chain, and therefore enabling the effective management of their environmental impact.

CERTIFIED IMPACT – NATURAL CAPITAL PARTNERS

By making our freight service carbon-neutral, Impala Terminals is able to provide essential funds to impactful carbon finance projects around the world.

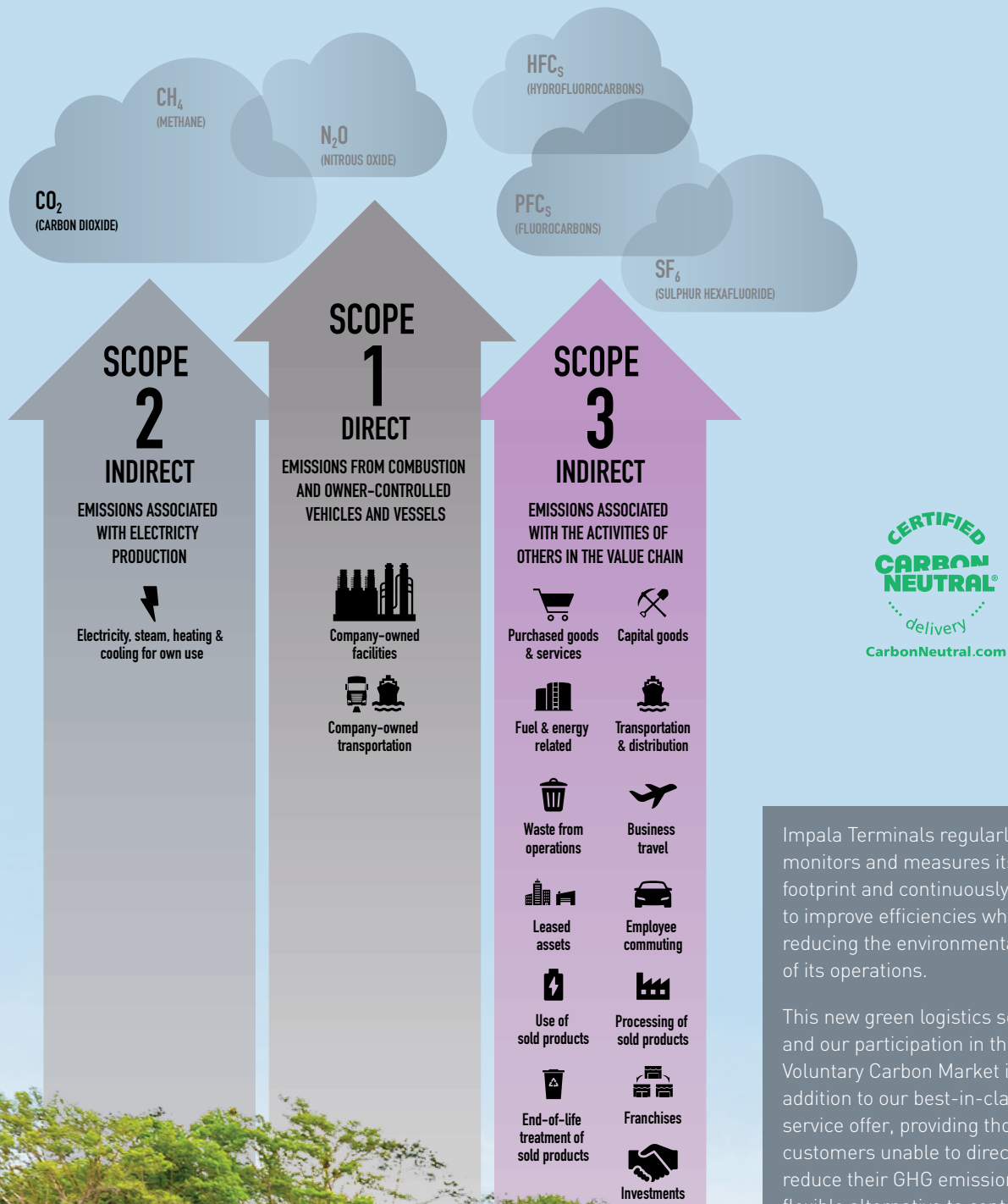
We work closely with world-recognised carbon neutrality and climate finance experts, Natural Capital Partners, who independently verify that our carbon neutral freight service meets CarbonNeutral® Protocol, the leading global framework for carbon neutrality.

 carbonneutral.com/protocol

 naturalcapitalpartners.com/projects



➤ OFFSETTING YOUR SCOPE 3 GHG EMISSIONS



Impala Terminals regularly monitors and measures its carbon footprint and continuously seeks to improve efficiencies whilst reducing the environmental impact of its operations.

This new green logistics solution and our participation in the Voluntary Carbon Market is further addition to our best-in-class service offer, providing those customers unable to directly reduce their GHG emissions with a flexible alternative to contribute to global carbon emissions reduction.

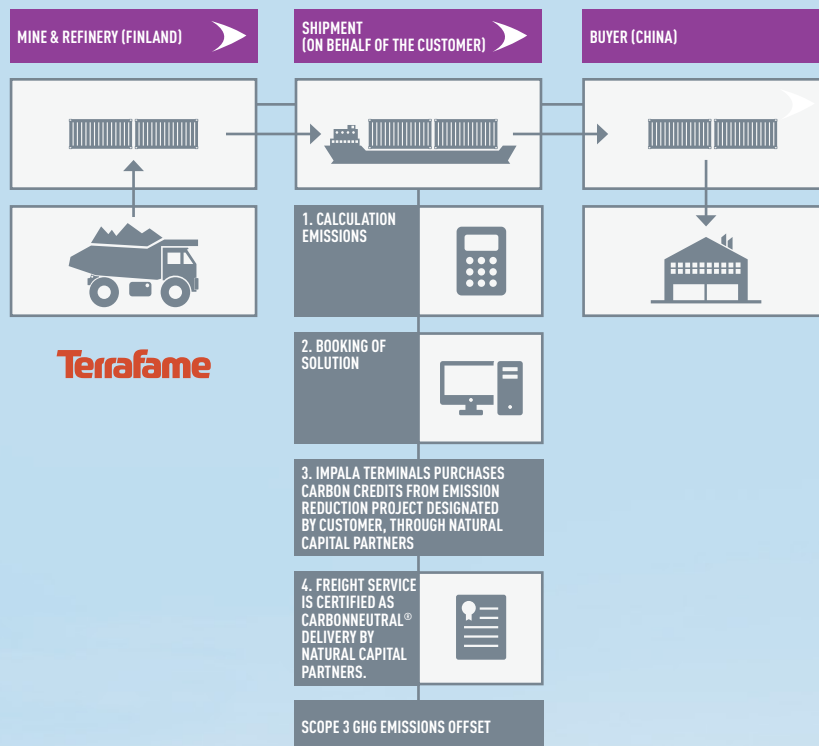
AUDITED AND CERTIFIED

CASE STUDY:

OFFSETTING EMISSIONS FROM MINE TO PORT

From early 2021, Impala Terminals has provided certified CarbonNeutral® deliveries on behalf of our joint owner and major customer Trafigura, transporting nickel precipitates via sea container originating from Terrafame's mine and refinery in Sotkamo, Finland to destination ports in China.

To offset the freight service's emissions, we have supported a verified greenhouse gas reduction project in Colombia – in a region where both Trafigura and Impala Terminals have significant business presence. The project aims to protect the Chocó-Darién Rainforest, one of the most biologically diverse areas in the world, from deforestation.



HOW TO BOOK

1 CONTACT IMPALA TERMINALS

Get in touch with our team to discuss your freight transport requirements and to calculate the estimated carbon footprint of your shipments. Please note that Impala Terminals provides audited CO₂ emission assessments.

2 CONFIRM THE CARBON NEUTRAL OFFER

A clear solution is identified that will offset Scope 3 greenhouse gas emissions by contributing to projects that work to remove the same amount of CO₂ generated during the shipments from the atmosphere, as well as contributing to local initiatives that support economic development.

3 CONTRIBUTE TO A LOWER-CARBON FUTURE

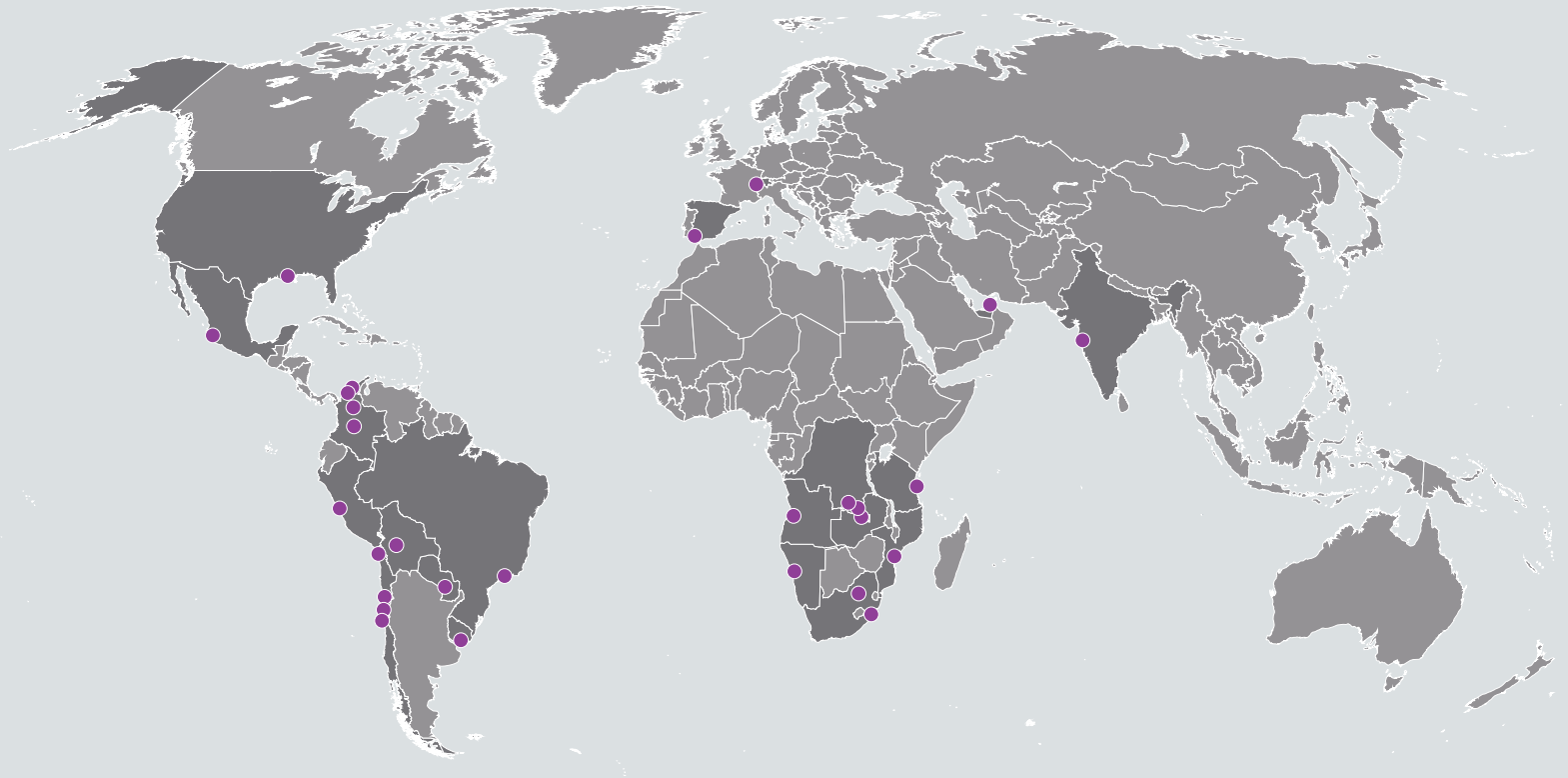
Reduce your environmental impact along your supply chain. Calculate and offset the emissions from your shipment through the purchase of carbon credits. Customers will be able to brand their deliveries as certified CarbonNeutral® as approved by our partner Natural Capital Partners and in accordance with The CarbonNeutral Protocol.

GET IN TOUCH:

Get in touch:

- 📧 impalacontainerfreight@impalaterminals.com
- 🌐 www.impalaterminals.com/contact
- 🌐 www.linkedin.com/company/impalaterminals

► OUR GLOBAL NETWORK OF TERMINALS



● IMPALA LOCATIONS

NORTH AMERICA

USA
Burnside

LATIN AMERICA

Bolivia
Oruro

Brazil
Porto Sudeste

Chile
Antofagasta
Arica
Coquimbo
Copiapó

Colombia
Barrancabermeja
Barranquilla
Bogotá*

Mexico
Manzanillo

Paraguay
Asunción

Peru
Callao

Uruguay
Montevideo*

EUROPE, ASIA & THE MIDDLE EAST

Greece
Athens*

India
Mumbai*

Spain
Huelva

Switzerland
Geneva*

United Arab Emirates
Dubai

AFRICA

Angola
Lobito

DRC
Kolwezi
Lubumbashi

Mozambique
Beira

Namibia
Walvis Bay

South Africa
Durban
Johannesburg*

Tanzania
Dar es Salaam

Zambia
Ndola

*Office location only

For more information please contact:
enquiries@impalaterminals.com
www.impalaterminals.com

IK/0364.1e

Last updated: March 2021



In this publication, the terms "Impala", "the company", "the group", "we", "us" and "our" are used for convenience to denote Impala group and/or one of its subsidiaries. These terms are used where no useful purpose is served by identifying a specific company or entity in the Impala group. www.impalaterminals.com