

# ACCESS > EXPERTISE

TERMINALS, LOGISTICS AND WAREHOUSING SERVICES ACROSS AFRICA

impala

In Africa, Impala Terminals operates a portfolio of safe and efficient warehouses and port terminals which provide handling, storage and other related services for both bonded and non-bonded cargoes. Impala Terminals also provides multimodal end to end delivery and supply chain solutions for imports and exports. This is achieved via its road and rail networks combined with ocean container freight forwarding services.

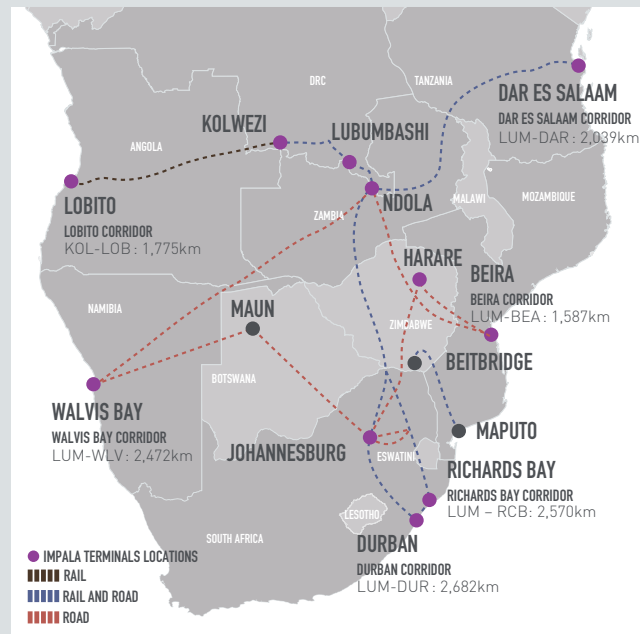
Impala Terminals is a major player in the African Copperbelt, Southern, Eastern and Central Africa and it is currently expanding its logistics capacity serving these regions by rail, truck and ocean container freight, allowing producers and consumers to access international markets by focusing on reducing transit times and cost whilst ensuring that we operate at the highest safety standards.

## STRATEGIC TERMINAL LOCATIONS

At our warehousing sites in the Democratic Republic of the Congo (DRC), Zambia and Tanzania, Impala Terminals offers enhanced services for the safe and secure handling of goods, it employs the latest technology and processes and operates at a high level of HSEC standards.

## MULTIMODAL LOGISTICS SOLUTIONS

- Supply chain solutions for imports, exports, intra-regional supplies
- Port services, freight forwarding (road, rail, ocean), clearing and warehousing services
- Metals, minerals, chemicals, agriculture, project cargo and general cargo
- Extensive regional transport network offering import, export route flexibility depending on market conditions



## TANZANIA > DAR ES SALAAM

55,000M<sup>2</sup>

LAND AREA

18,000M<sup>2</sup>

COVERED WAREHOUSES

## DRC > LUBUMBASHI 1

25,000M<sup>2</sup>

LAND AREA

2,500M<sup>2</sup>

COVERED WAREHOUSE BULK/  
BREAK-BULK

## DRC > LUBUMBASHI 2

550,000M<sup>2</sup>

LAND AREA

6,000M<sup>2</sup>

COVERED BONDED WAREHOUSE

45MT

OF LIFTING EQUIPMENT CAPACITY



## ZAMBIA > NDOLA

55,000M<sup>2</sup>

LAND AREA

9,000M<sup>2</sup>

COVERED BONDED WAREHOUSE

45MT

OF LIFTING EQUIPMENT CAPACITY



## NAMIBIA > WALVIS BAY

5,000M<sup>2</sup>

COVERED WAREHOUSE

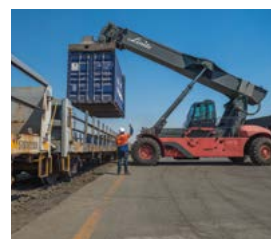
## DRC > KOLWEZI

200,000M<sup>2</sup>

LAND AREA

10,500M<sup>2</sup>

COVERED WAREHOUSE



## SOUTH AFRICA > JOHANNESBURG, DURBAN

60,000M<sup>2</sup>

COVERED WAREHOUSES BULK/  
BREAK-BULK

4,000M<sup>2</sup>

EXTERNAL YARD

## ANGOLA > LOBITO

3,000M<sup>2</sup>

AREA

RAIL AND ROAD CONNECTIVITY

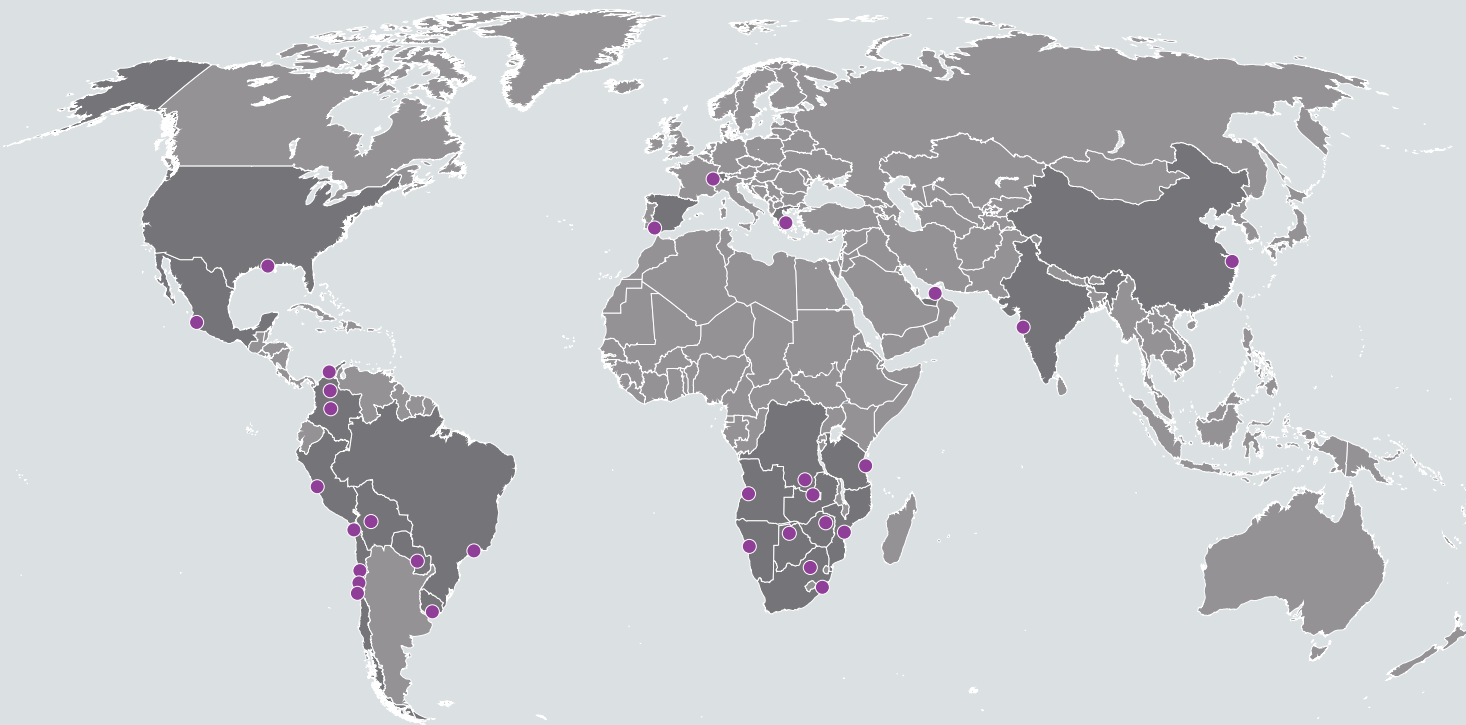
RAIL SIDING AND CONTAINER HANDLING

## MOZAMBIQUE > BEIRA

6,000M<sup>2</sup>

COVERED WAREHOUSES BULK/  
BREAK-BULK

# ► OUR GLOBAL NETWORK OF TERMINALS



● IMPALA LOCATIONS

## NORTH AMERICA

### USA

Burnside

## LATIN AMERICA

### Bolivia

Oruro

### Brazil

Porto Sudeste

### Chile

Antofagasta

Arica

Coquimbo

Copiapó

### Colombia

Barrancabermeja

Barranquilla

Bogotá\*

### Equador

Guayaquil

### Mexico

Manzanillo

### Paraguay

Asunción

### Peru

Callao

### Uruguay

Montevideo\*

## EUROPE, ASIA & THE MIDDLE EAST

### China

Shanghai\*

### Greece

Athens\*

### India

Mumbai\*

### Spain

Huelva

### Switzerland

Geneva\*

### United Arab Emirates

Dubai

## AFRICA

### Angola

Lobito

### Botswana

Maun

### DRC

Kolwezi

Lubumbashi

### Mozambique

Beira

### Namibia

Walvis Bay

### South Africa

Durban

Johannesburg\*

### Tanzania

Dar es Salaam

### Zambia

Ndola

### Zimbabwe

Harare

\*Office location only

FOR MORE INFORMATION PLEASE CONTACT: [enquiries@impalaterminals.com](mailto:enquiries@impalaterminals.com) [www.impalaterminals.com](http://www.impalaterminals.com)

IF/0186.6e